

## IKKi/IKKε antibody (mAb)

**Catalog No:** 40950**Clone:** 72B587**Isotype:** IgG1**Application(s):** WB**Reactivity:** Human, Mouse, Rat**Purification:** Affinity Purified**Host:** Mouse**Concentration:** 0.5 µg/µl**Quantity:** 100 µg**Molecular Weight:** 80 kDa

**Background:** IKKi/IKKε – IκB Kinase-epsilon (also called IKKi) is a homolog of the IKK (IκB kinase) catalytic subunits IKKα and IKKβ. IKKε is primarily expressed in immune cells and may be responsible for modulation of NFκB (NFκB p50 and NFκB p65) activity in the immune system.

**Immunogen:** This IKKi/IKKε antibody was raised against a synthetic peptide corresponding to amino acid residues 175-188 of human IKKi/IKKε.

**Buffer:** PBS containing 0.02% sodium azide. Sodium azide is highly toxic.

**Application Notes:**

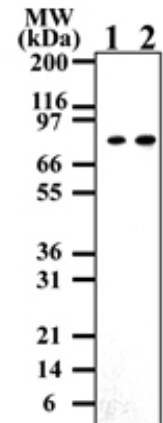
Validated Applications:

WB: 1 - 3 µg/ml dilution

For optimal results, primary antibody incubations should be performed at room temperature. The addition of 0.1% Tween 20 to all Blotto solutions may also reduce background. Individual optimization may be required.

**Storage and Guarantee:** Antibodies in solution can be stored at -20°C for 2 years. Avoid repeated freeze/thaw cycles and keep on ice when not in storage. This product is guaranteed for 6 months from date of receipt.

This product is for research use only and is not for use in diagnostic procedures.

**IKKi/IKKε mAb tested by Western blot.**

IKKi/IKKε detection by Western blot. The analysis was performed using 10 µg of whole-cell extract from Daudi cells and IKKi/IKKε mAb at dilutions of 0.5 µg/ml (lane 1) and 3 µg/ml (lane 2).